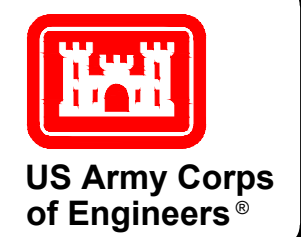


NSRS BENCHMARK	LOCAL CONTROL
BENCHMARK: P 38 (PID:KV0333) ELEVATION: 21.93' (NAVD 1988)	BENCHMARK: TIDAL 6 STA 4 (PID:KV0611) ELEVATION: 7.65 (NAVD 1988)

PROJECT SPECIFIC NOTES:

- THE INFORMATION DEPICTED ON THIS MAP REPRESENTS THE RESULTS OF SURVEYS MADE ON THE DATES INDICATED AND CAN ONLY BE CONSIDERED AS THE GENERAL CONDITIONS EXISTING AT THAT TIME.
- THE SOUNDINGS ON THIS MAP MEET EM 1110-2-1003 ACCURACY STANDARDS.
- THIS MAP IS CEPD COMPLIANT IN ACCORDANCE WITH ER 1110-2-8160 AND EM 1110-2-6056.
- COORDINATES REFER TO US STATE PLANE COORDINATE SYSTEM NAD 1983, NEW JERSEY MERCATOR - ZONE 2900, US SURVEY FEET.
- SOUNDINGS ON THIS MAP REFER TO THE PLANE OF MEAN LOWER LOW WATER (MLLW) (EPOCH 1983-2001).
- MEAN LOWER LOW WATER IS 2.8 FEET BELOW NAVD88 AS DETERMINED USING VDATUM (VER. 4.6.1).
- SOUNDINGS DEPICTED ON THIS MAP ARE BASED ON A 3'x 3' MEDIAN CELL, SORTED TO A 30' INTERVAL.
- CONTOURS ON THIS MAP WERE GENERATED USING THE 3'x 3' DATA SET.
- THE DATA DEPICTED ON THIS MAP SHOULD NOT BE USED FOR VOLUME CALCULATION PURPOSES.
- AERIAL IMAGERY PROVIDED BY 2022 NOAA DIGITAL AND IS FOR ORIENTATION PURPOSES ONLY.
- THIS SURVEY WAS PERFORMED USING REAL TIME KINEMATIC GPS FROM STATION "CAVEN POINT".



PR	CAMESO
MP	CAM

DATES OF SURVEY: 30 MARCH 2026 21 APRIL 2026	REQUEST NUMBER: 5683JN2
--	-------------------------

SCALE: ONE INCH = 400 FEET	FIELD BOOKS: 1055
-------------------------------	----------------------

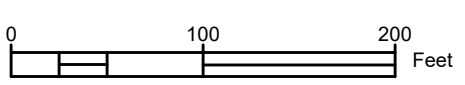
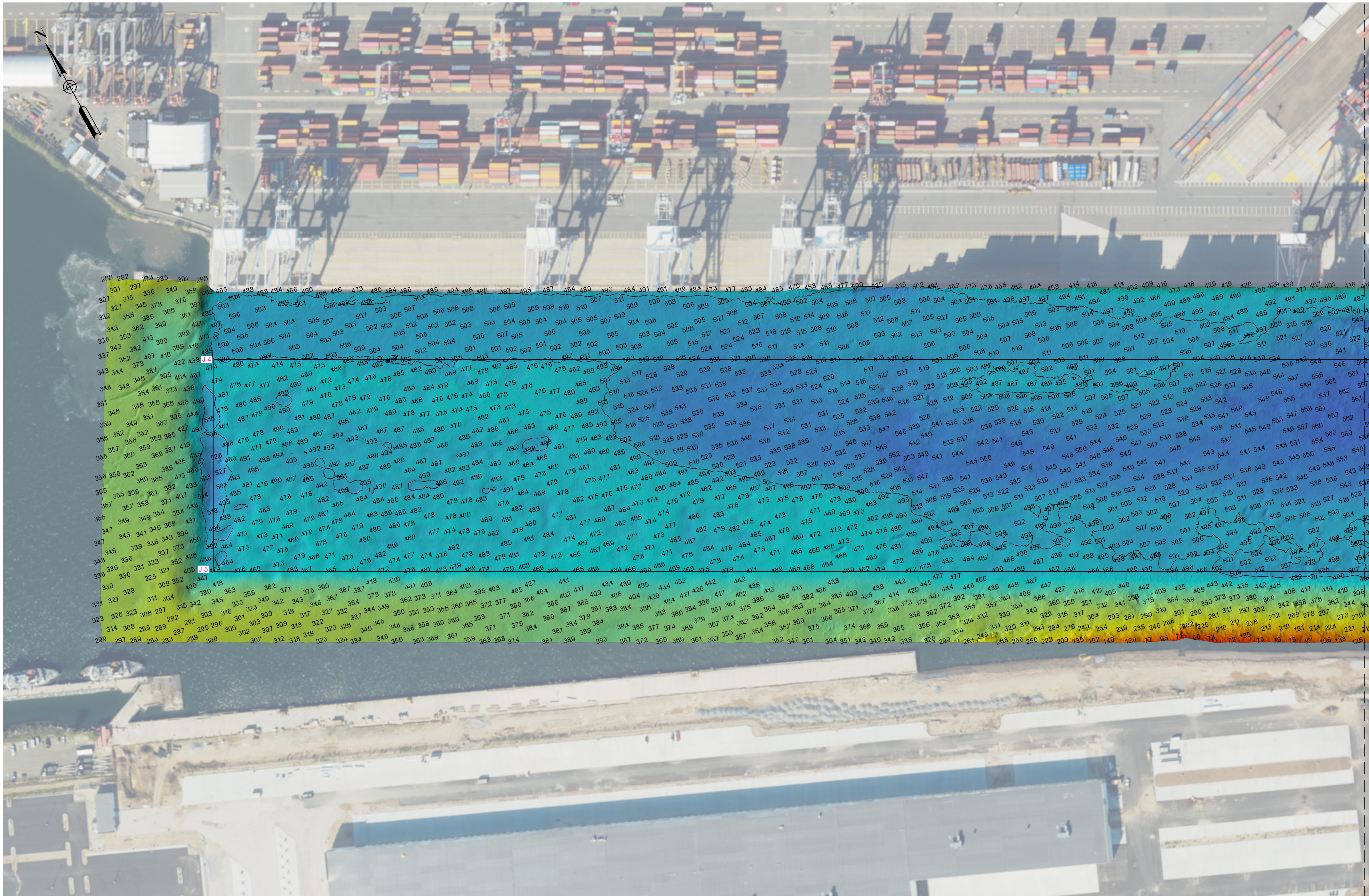
APPROVED: J. MCKELVEY FIELD CARTOGRAPHER	APPROVED: J. MCKELVEY CHIEF OF SURVEYS AND MAPPING BRANCH
APPROVED: B. LOGAN US TOPOGRAPHER	APPROVED: B. LOGAN CHIEF OF SURVEYS AND MAPPING BRANCH
APPROVED: P. BHADUR CHIEF OF SURVEY SUPPORT SECTION	APPROVED: P. BHADUR CHIEF OF SURVEYS AND MAPPING BRANCH
APPROVED: J. MRAZ CHIEF OF SURVEYS AND MAPPING BRANCH	APPROVED: J. MRAZ CHIEF OF SURVEYS AND MAPPING BRANCH
ISSUE DATE: 24 APRIL 2026	

U.S. ARMY CORPS OF ENGINEERS
 NEW YORK DISTRICT
 NEW YORK, NEW YORK 10278

OPERATIONS DIVISION
 SURVEYS AND MAPPING BRANCH
 CENAN-OP-SS

NEW YORK HARBOR
 PORT JERSEY
 CONDITION SURVEY

P
N
M
L
K
J
H
G
F
E
D
C
B
A



US Army Corps of Engineers®

PR	CAMLESO
MP	CAM

DATES OF SURVEY:	30 MARCH 2026
	21 APRIL 2026
SCALE:	ONE INCH = 100 FEET
FIELD BOOKS:	1055
REQUEST NUMBER:	5683N2

APPROVED:	J. MCKELVEY TOPOGRAPHER
APPROVED:	B. LIGONIS LEAD PHOTOGRAPHER
APPROVED:	P. BHADUR CHIEF OF SURVEY SUPPORT SECTION
APPROVED:	J. MRAZ CHIEF OF SURVEYS AND MAPPING BRANCH
ISSUE DATE:	24 APRIL 2026

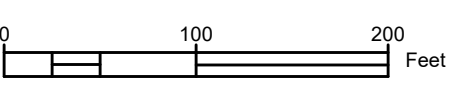
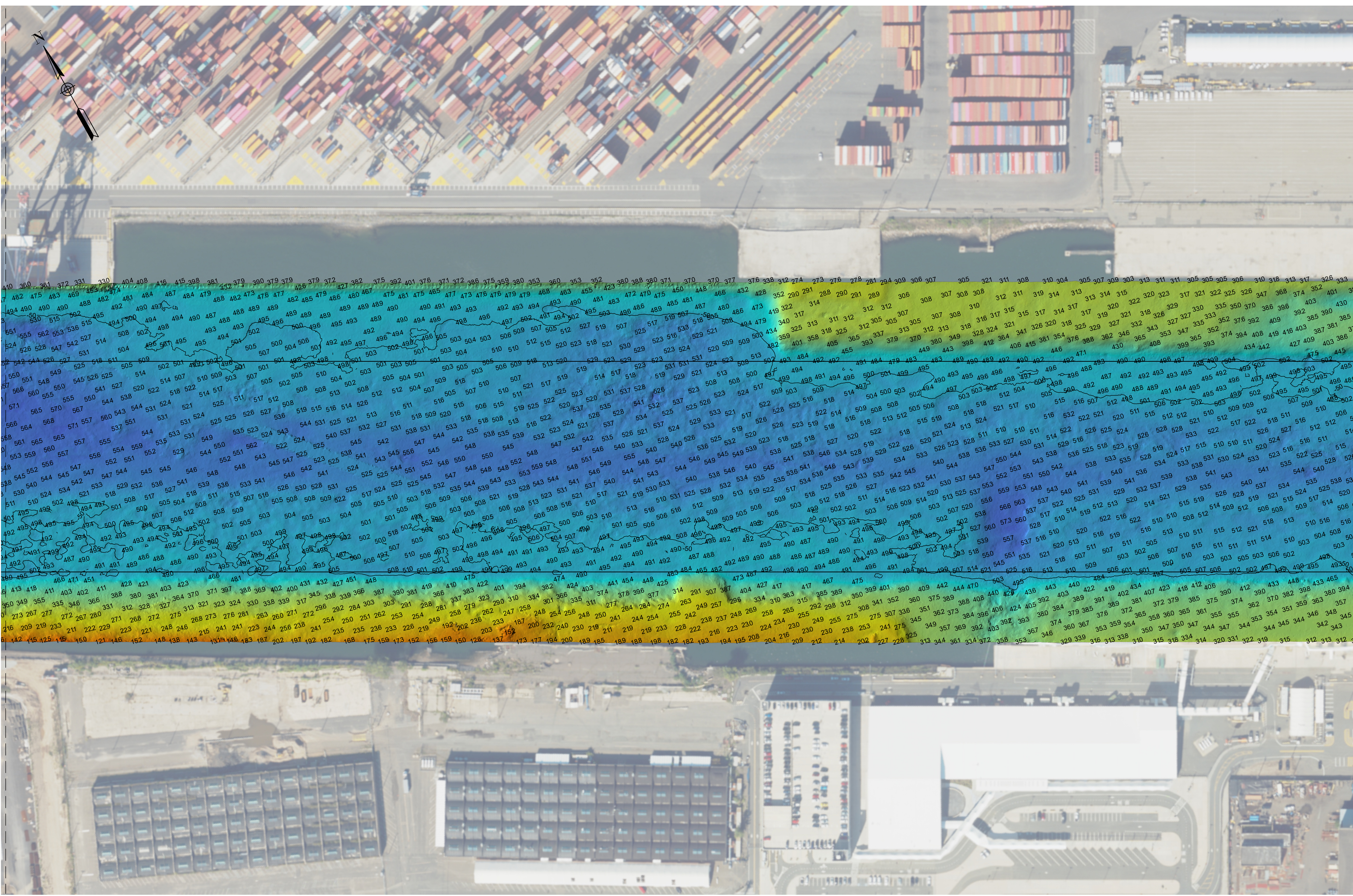
U.S. ARMY CORPS OF ENGINEERS
NEW YORK DISTRICT
NEW YORK, NEW YORK 10278

OPERATIONS DIVISION
SURVEYS AND MAPPING BRANCH
CENAN-OP-SS

NEW YORK HARBOR
PORT JERSEY
CONDITION SURVEY

VH-102
2 OF 5

*FOR PROJECT NOTES AND CONTROL REFER TO VH-101



US Army Corps of Engineers®

PR	CAMLESCO
MP	CAM

DATES OF SURVEY: 30 MARCH 2026 21 APRIL 2026	SCALE: ONE INCH = 100 FEET	FIELD BOOKS: 1055	REQUEST NUMBER: 5683N2
--	-------------------------------	----------------------	---------------------------

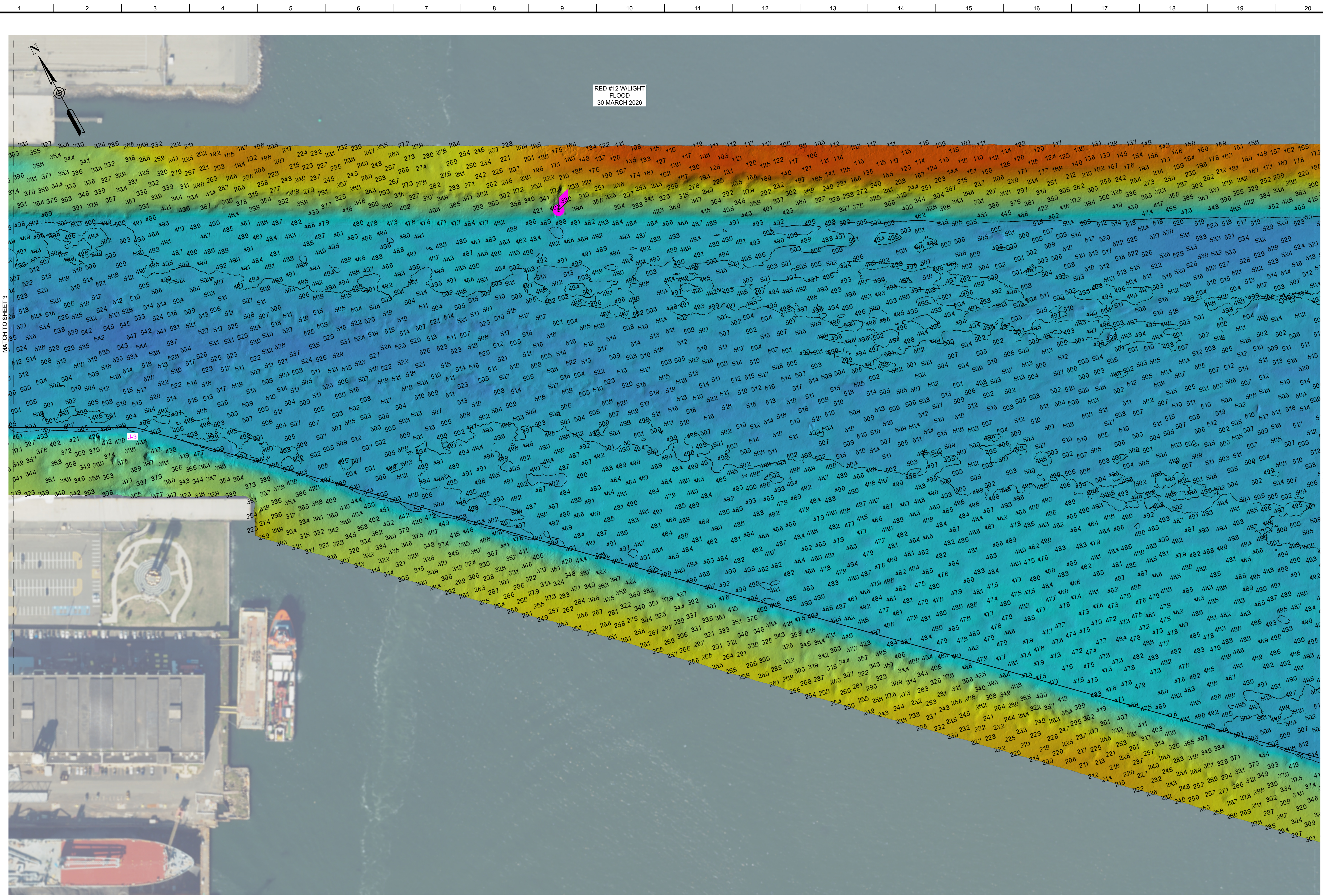
APPROVED: J. MCKELVEY PHOTOGRAPHER	APPROVED: B. LIGONAS LEGAL PHOTOGRAPHER	APPROVED: P. BHADUR CHIEF OF SURVEY SUPPORT SECTION	APPROVED: J. MRAZ CHIEF OF SURVEYS AND MAPPING BRANCH
U.S. ARMY CORPS OF ENGINEERS NEW YORK DISTRICT NEW YORK, NEW YORK 10278		OPERATIONS DIVISION SURVEYS AND MAPPING BRANCH CENAN-OPSS	

ISSUE DATE: 24 APRIL 2026

NEW YORK HARBOR
PORT JERSEY
CONDITION SURVEY

VH-103
3 OF 5

*FOR PROJECT NOTES AND CONTROL REFER TO VH-101



RED #12 W/LIGHT
FLOOD
30 MARCH 2026



US Army Corps
of Engineers®

PR	CAMESCO
MP	CAM

DATES OF SURVEY: 30 MARCH 2026 21 APRIL 2026	SCALE: ONE INCH = 100 FEET	FIELD BOOKS: 1055	REQUEST NUMBER: 568322
--	-------------------------------	----------------------	---------------------------

APPROVED:	J. MCKELVEY REGULATORY SUPERVISOR
APPROVED:	B. LIGONAS LEAD PHOTOGRAPHER
APPROVED:	P. BHADOUR CHIEF OF SURVEY SUPPORT SECTION
APPROVED:	J. MRAZ CHIEF OF SURVEYS AND MAPPING BRANCH
ISSUE DATE:	24 APRIL 2026

U.S. ARMY CORPS OF ENGINEERS
NEW YORK DISTRICT
NEW YORK, NEW YORK 10278

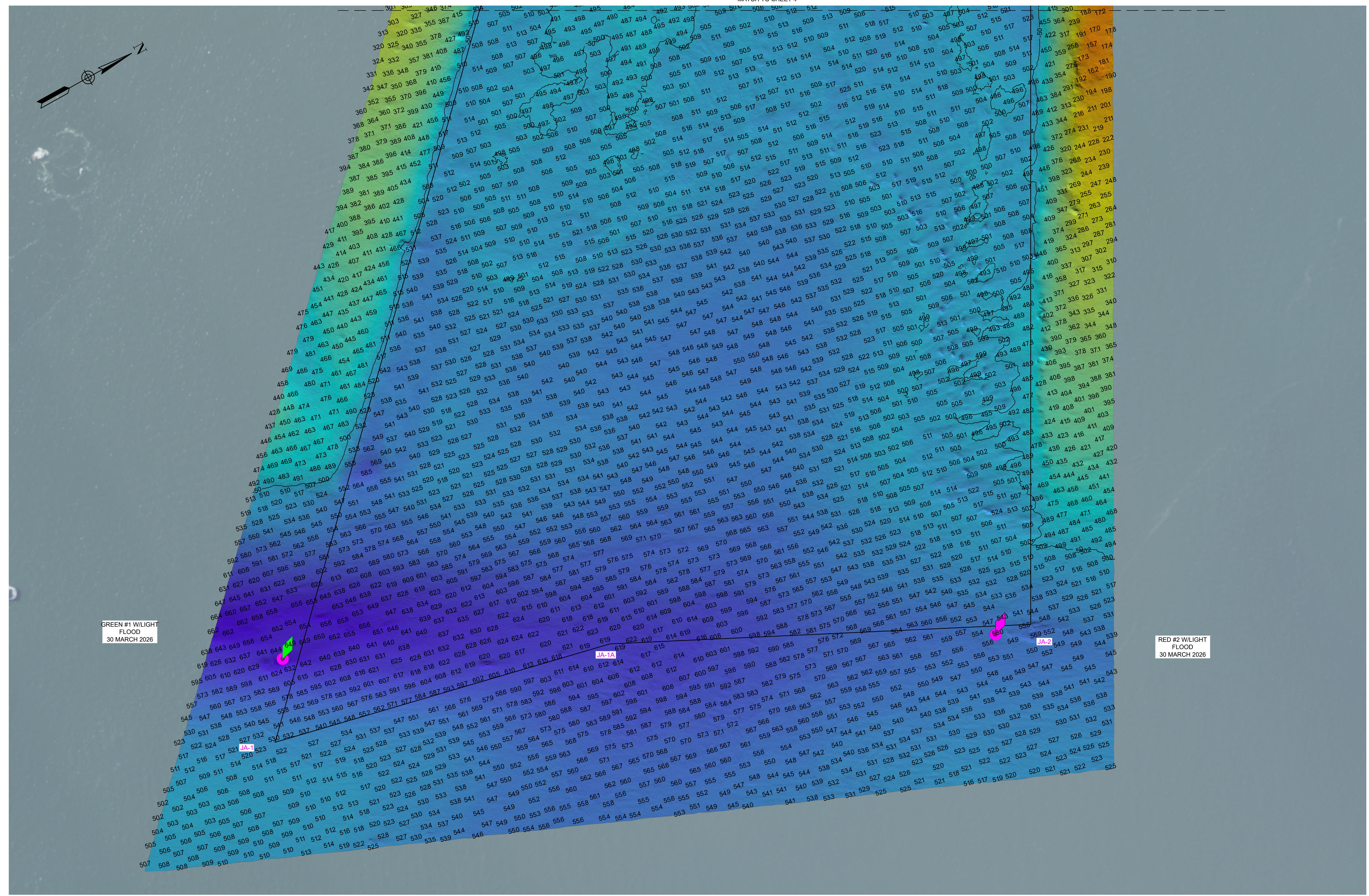
OPERATIONS DIVISION
SURVEYS AND MAPPING BRANCH
CENAN-OP-SS

NEW YORK HARBOR
PORT JERSEY

CONDITION SURVEY

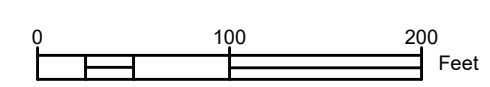
VH-104
4 OF 5

*FOR PROJECT NOTES AND CONTROL REFER TO VH-101



GREEN #1 W/LIGHT FLOOD 30 MARCH 2026

RED #2 W/LIGHT FLOOD 30 MARCH 2026



PR	CALMESO
MAP	CAM

DATES OF SURVEY:	30 MARCH 2026 21 APRIL 2026
SCALE:	ONE INCH = 100 FEET
FIELD BOOKS:	1055
REQUEST NUMBER:	5683N2

APPROVED:	J. MCKELVEY TOPOGRAPHER
APPROVED:	B. HIGDON TOPOGRAPHER
APPROVED:	P. BHADUR CHIEF OF SURVEY SUPPORT SECTION
APPROVED:	J. MRAZ CHIEF OF SURVEYS AND MAPPING BRANCH
ISSUE DATE:	24 APRIL 2026

U.S. ARMY CORPS OF ENGINEERS
NEW YORK DISTRICT
NEW YORK, NEW YORK 10278

OPERATIONS DIVISION
SURVEYS AND MAPPING BRANCH
CENAN-OP-SS

NEW YORK HARBOR
PORT JERSEY

CONDITION SURVEY

*FOR PROJECT NOTES AND CONTROL REFER TO VH-101